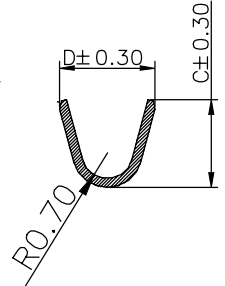


NOTES:
 1. MATERIAL: COPPER ALLOY, THICKNESS 0.25±0.01.
 2. PLATING:
 N:30u" MIN. NICKEL UNDERPLATING OVERALL
 50~100u" PURE TIN PLATING OVERALL
 A:20~80u" NICKEL PLATING OVERALL
 3U" MIN GOLD PLATING ON CONTACT
 3. COMPONENT LOAD PER REEL: XXK PCS.
 4. APPLICABLE WIRE RANGE:
 001 STANDARD: AWG#18~22
 002 STANDARD: AWG#16
 003 STANDARD: AWG#24
 5. INSULATION O.D.: φ2.30mm (MAX.)
 6. SPEC. PLS. REFER TO PS-51281-XXXX-XXX
 7. PART NUMBER
 51282-T X X X- XXX

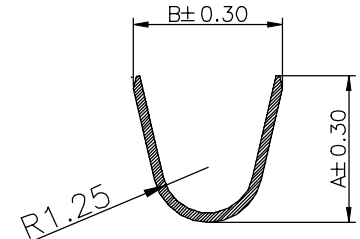
XXX	AWG
001	#18~22
002	#16~18
003	#24

TYPE _____
 O:NONE

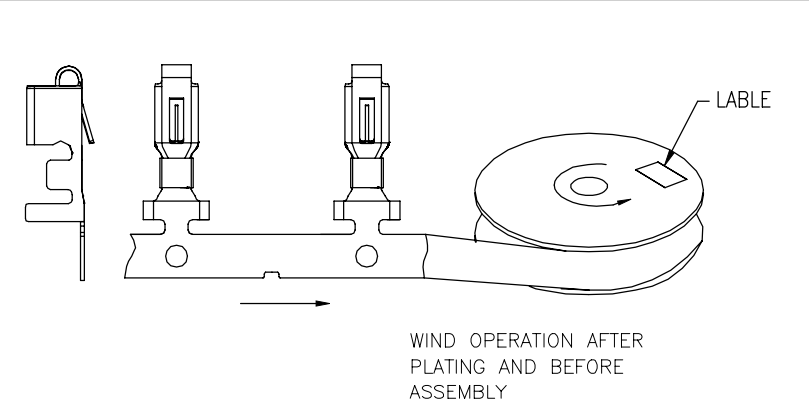
MATERIAL _____ PLATING:
 1:PHOSPHOR BRONZE L: PURE TIN PLATING
 A: 3U" GOLD ON CONTACT FOR LEAD FREE



SECTION A-A



SECTION B-B



P/N	Dim A	Dim B	Dim C	Dim D	AWG
51282-TXXX-001	4.0	4.0	2.4	2.6	#18~22
51282-TXXX-002	4.5	4.0	3.0	2.6	#16~18
51282-TXXX-003	4.5	4.0	1.7	2.2	#24

QUALITY SYMBOLS MAJOR Ⓢ CRITICAL Ⓢ GENERAL TOLERANCES (UNLESS SPECIFIED) X ±0.50 XX ±0.25 XXX ±0.15 XXXX ±0.10 ANGLES ±2°	DRAWN BY Hu, Shul Hong DATE 23/07/22		
	CHECKED BY Lu, ling Quan DATE 23/07/22		TITLE 3.96mm WTB CRIMP TERMINAL
	APPROVED BY hsieh, fu yu DATE 23/07/22		
	UNITS mm	SIZE A4	RFG. NO. N/A
	SCALE 4:1	SHEET NO. 1 OF 1	REV E DWG NO. 51282-TXXX-XXX